

The zebrafish (*Danio rerio*) is a widely-used vertebrate model organism in scientific research, for the complete sequencing of its genome shows that it has more than 80% genes in common with human. Most cellular pathways are identical between human and fish, and work on this particular species is made much easier by its embryos transparency, which allows major advances in research areas such as toxicology or developmental biology. Moreover, its impressive regenerative abilities make it a very interesting model in the field of stem cells research and tissue regeneration.

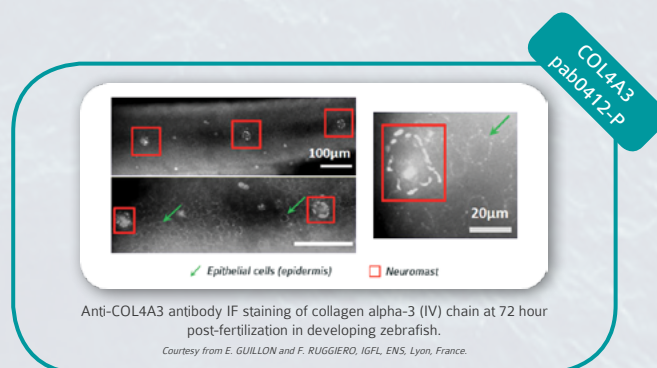
These antibodies against Zebrafish and other marine species proteins may interest you:

Antibodies against Zebrafish proteins

Target	Host	Species	Applications	Cat N°
14-3-3 Beta	Rabbit	Zfi, Hu	ICC, IF, IHC - P, WB	pab73313
14-3-3 Beta	Rabbit	Zfi, Hu	ICC, IF, IHC - P, WB	pab73314
14-3-3 Gamma (KC21)	Mouse	Zfi, Hu, Ma, Chick ...	WB	mab50115
14-3-3 Gamma (HS23)	Mouse	Zfi, Hu, Ma, Chick ...	WB	mab50036
ACTA1 / ASMA	Rabbit	Zfi, Hu, Fi	IHC - P, WB	pab73045
ACTA2	Rabbit	Zfi, Hu, Ms	IHC - P, WB	pab75251
AMPD1 (aa140-190)	Rabbit	Zfi, Hu, Ma, Ms ...	IHC - P, WB	pab72198
AMPD1 (aa500-550)	Rabbit	Zfi, Hu, Ma, Ms ...	IHC - P, WB	pab72199
ATG4B	Rabbit	Zfi, Pfi, Hu, Ma, Xe ...	IHC - P, WB	pab74475
ATG5	Rabbit	Zfi, Hu, Ms, Pfi, Ma, Rat	IHC - P, WB	pab72230
Autophagy Protein 5 [Biotin]	Rabbit	Zfi, Hu, Ma, Xe ...	IHC, WB	pab51215
Autophagy Protein 5 [DyLight 488]	Rabbit	Zfi, Hu, Ma, Xe ...	IHC, WB	pab51217
Autophagy Protein 5 [DyLight 550]	Rabbit	Zfi, Hu, Ma, Xe ...	IHC, WB	pab51219
Autophagy Protein 5 [DyLight 650]	Rabbit	Zfi, Hu, Ma, Xe ...	IHC, WB	pab51216
Autophagy Protein 5 [HRP]	Rabbit	Zfi, Hu, Ma, Xe ...	ICC, IHC, WB	pab51218
CAAX Prenyl Protease 1 Homolog	Rabbit	Zfi, Hu, Ms, Mk	WB	pab50234
CASK (S56A-50)	Mouse	Zfi, Xe, Hu, Ms, Rat	IHC - P, IP, WB	mab71574
Collagen Alpha-3 (IV) Chain / COL4A3	Rabbit	Zfi, Hu, Ms	ELISA, IHC, WB	pab0412
Collagen Alpha-3 (IV) Chain / COL4A3	Rabbit	Zfi, Hu, Ms	ELISA, IHC, WB	pab0412-P
CRTC1 / MECT1 (aa19-34)	Rabbit	Zfi, Pfi, Hu, Ma ...	ELISA, IHC - P, WB	pab70092
CXCR4B	Rabbit	Zfi	ELISA, IHC, WB	pab0736
CYP1B1 (aa200-250)	Rabbit	Zfi, Hu, Ma, Ms ...	IHC - P, WB	pab72196
DACT1 (aa725-775)	Rabbit	Zfi, Hu, Ma, Chick, Xe	IHC - P, WB	pab74661
DCC (aa1437-1447)	Goat	Zfi, Hu, Ms, Rat ...	IHC - P	pab73546
Diacylglycerol O-acyltransferase 1 [Biotin]	Rabbit	Zfi, Bov, Hu, Ms, Rat	WB	pab51165
Diacylglycerol O-acyltransferase 1 [DyLight 488]	Rabbit	Zfi, Bov, Hu, Ms, Rat	WB	pab51167
Diacylglycerol O-acyltransferase 1 [DyLight 550]	Rabbit	Zfi, Bov, Hu, Ms, Rat	WB	pab51169
Diacylglycerol O-acyltransferase 1 [DyLight 650]	Rabbit	Zfi, Bov, Hu, Ms, Rat	WB	pab51166
Diacylglycerol O-acyltransferase 1 [HRP]	Rabbit	Zfi, Bov, Hu, Ms, Rat	WB	pab51168

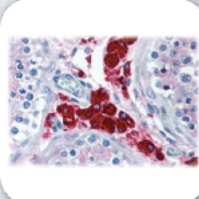
Antibodies against Zebrafish proteins (continued)

Target	Host	Species	Applications	Cat N°
DUSP16 (aa600-650)	Rabbit	Zfi, Hu, Ma, Chick, Ms	IHC - P, WB	pab72184
EPHB2 (Internal)	Rabbit	Zfi, Hu, Ms, Rat ...	IHC - P	pab70910
FOXC1 (C-Terminus)	Goat	Zfi, Hu, Ms, Xe, Mk	ELISA, IHC - P, WB	pab72593
GPR22 (Cytoplasmic Domain)	Rabbit	Zfi, Hu, Chick ...	IHC - P	pab71237
GPR85 (Extracellular Domain)	Rabbit	Zfi, Hu, Ms, Rat ...	IHC - P	pab71375
GRK5	Rabbit	Zfi, Hu, Chick, Ma, Pfi	IHC - P, WB	pab72201
High Affinity Copper Uptake Protein 1	Rabbit	Zfi, Hu, Ms, Po, Rat, Xe	IHC - P	pab50112
High Affinity Copper Uptake Protein 1 [Biotin]	Rabbit	Zfi, Hu, Ms, Po, Rat, Xe	IHC - P	pab50871
High Affinity Copper Uptake Protein 1 [DyLight 488]	Rabbit	Zfi, Hu, Ms, Po, Rat, Xe	IHC - P	pab50873
High Affinity Copper Uptake Protein 1 [DyLight 550]	Rabbit	Zfi, Hu, Ms, Po, Rat, Xe	IHC - P	pab50875
High Affinity Copper Uptake Protein 1 [DyLight 650]	Rabbit	Zfi, Hu, Ms, Po, Rat, Xe	IHC - P	pab50872
High Affinity Copper Uptake Protein 1 [HRP]	Rabbit	Zfi, Hu, Ms, Po, Rat, Xe	IHC - P	pab50874
Histone H2B (aa111-125)	Rabbit	Zfi, Hu, D. mel., Ma ...	IHC - P, WB	pab74509
Histone H4 (aa15-30)	Rabbit	Zfi, Hu, Xe, D. mel. ...	IHC - P, WB	pab74510
HSP90B1 / GRP94 (aa590-640)	Rabbit	Zfi, Hu, Ma, Chick, Xe	IHC - P, WB	pab74472
JMJD6	Rabbit	Zfi, Hu, Ma, Xe ...	ICC, WB	pab52834
KDM1A / LSD1 (aa100-150)	Rabbit	Zfi, Hu, Ca, Mk, Ms, Rat	IHC - P, WB	pab72287
Kv1	Rabbit	Zfi, Hu, Ma, Xe ...	IP, WB	pab52451
Kv1 [Biotin]	Rabbit	Zfi, Hu, Ma, Xe ...	IP, WB	pab52452
Kv1 [DyLight 488]	Rabbit	Zfi, Hu, Ma, Xe ...	IP, WB	pab52454
Kv1 [DyLight 550]	Rabbit	Zfi, Hu, Ma, Xe ...	IP, WB	pab52456
Kv1 [DyLight 650]	Rabbit	Zfi, Hu, Ma, Xe ...	IP, WB	pab52453
Kv1 [HRP]	Rabbit	Zfi, Hu, Ma, Xe ...	IP, WB	pab52455
Kv1.2	Rabbit	Zfi, Hu, Ma, Xe ...	ICC, WB	pab52458
Kv1.2 [Biotin]	Rabbit	Zfi, Hu, Ma, Xe ...	ICC, WB	pab52459
Kv1.2 [DyLight 488]	Rabbit	Zfi, Hu, Ma, Xe ...	ICC, WB	pab52461
Kv1.2 [DyLight 550]	Rabbit	Zfi, Hu, Ma, Xe ...	ICC, WB	pab52463
Kv1.2 [DyLight 650]	Rabbit	Zfi, Hu, Ma, Xe ...	ICC, WB	pab52460
Kv1.2 [HRP]	Rabbit	Zfi, Hu, Ma, Xe ...	ICC, WB	pab52462
LC3	Rabbit	Zfi, Bov, Hu, Ms, Rat	FC, IHC - P, WB	pab52327
LPCAT1 (Internal)	Rabbit	Zfi, Hu, Rat ...	IHC - P	pab71649
MAF (aa50-100)	Rabbit	Zfi, Hu, Chick, Xe, Ms	IHC - P, WB	pab72200
MAP1LC3A (aa1-50)	Rabbit	Zfi, Hu, Ms, Rat ...	IHC - P, WB	pab74434
MARCH4 (aa300-350)	Rabbit	Zfi, Hu, Chick, Ms, Rat	IHC - P, WB	pab72188
MCT1 (aa3-14)	Rabbit	Zfi, Hu, Ms, Chick ...	ELISA, IHC - P, WB	pab71719
MLL4 (C-Terminus)	Goat	Zfi, Hu, Ms, Rat ...	ELISA, IHC - P	pab72784
MORF4L1 / MRG15 (N-Terminus)	Goat	Zfi, Hu, Ms, Rat ...	ELISA, IHC - P	pab72786



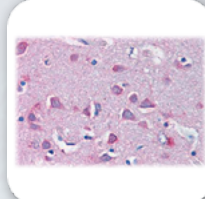
Antibodies against Zebrafish proteins (continued)

Target	Host	Species	Applications	Cat N°
Na ⁺ /K ⁺ ATPase Alpha-1 Subunit (A1F6)	Mouse	Zfi, Hu, Chick, Ms, Rat	IHC, IP, WB	mab0102-P
NF2 (Internal)	Goat	Zfi, Hu	ELISA, IHC - P	pab72351
NTN1 / Netrin 1 (C-Terminus)	Goat	Zfi, Hu, Xe, Ms, Rat ...	ELISA, IHC - P, WB	pab73827
P540 Aromatase (Cyp19b)	Rabbit	Zfi	ELISA, IHC, WB	pab0693
Paired Box Protein PAX-6	Rabbit	Zfi, Hu, Rat, Ms, Xe	ELISA, WB	pab0831-P
PARK7 / DJ-1 (aa177-189)	Rabbit	Zfi, Hu, Mk	ELISA, IHC - P, WB	pab70048
Peptidyl-prolyl cis-trans Isomerase FKBP1B / PPlase FKBP1B	Rabbit	Zfi, Hu, Ms, Rat, Rab	ELISA, IHC, WB	pab0797-P
RAB7 (aa90-140)	Rabbit	Zfi, Hu, Chick, Xe, Ma	IHC - P, WB	pab72181
SNX27	Rabbit	Zfi, Bov, Hu, Ms, Rat	ICC, IF, IHC - P, WB	pab52551
SNX27 [Biotin]	Rabbit	Zfi, Bov, Hu, Ms, Rat	ICC, WB	pab52552
SNX27 [DyLight 488]	Rabbit	Zfi, Bov, Hu, Ms, Rat	ICC, IF, WB	pab52554
SNX27 [DyLight 550]	Rabbit	Zfi, Bov, Hu, Ms, Rat	ICC, IF, WB	pab52556
SNX27 [DyLight 650]	Rabbit	Zfi, Bov, Hu, Ms, Rat	ICC, IF, WB	pab52553
SNX27 [HRP]	Rabbit	Zfi, Bov, Hu, Ms, Rat	ICC, WB	pab52555
SOX17 (aa70-120)	Rabbit	Zfi, Fi, Hu, Ma ...	IHC - P, WB	pab75519
SOX17 (aa70-120)	Rabbit	Zfi, Fi, Hu, Ma ...	IHC - P, WB	pab75519
STRAP (aa230-280)	Rabbit	Zfi, Hu, Ma, Xe, Ms ...	IHC - P, WB	pab74471
SYN1 / Synapsin (Ser9)	Rabbit	Zfi, Hu, Ms, Rat ...	IHC - P, WB	pab73090
TARBP2 (aa150-200)	Rabbit	Zfi, Hu, Ms, Rat ...	IHC - P, WB	pab72293
TARDBP	Rabbit	Zfi, Hu, Chick, Ma, Xe ...	WB	pab50273
TARDBP [Biotin]	Rabbit	Zfi, Hu, Chick, Ma, Xe ...	WB	pab51257
TARDBP [DyLight 488]	Rabbit	Zfi, Hu, Chick, Ma, Xe ...	WB	pab51259
TARDBP [DyLight 550]	Rabbit	Zfi, Hu, Chick, Ma, Xe ...	WB	pab51261
TARDBP [DyLight 650]	Rabbit	Zfi, Hu, Chick, Ma, Xe ...	WB	pab51258
TARDBP [HRP]	Rabbit	Zfi, Hu, Chick, Ma, Xe ...	WB	pab51260
TFG (aa350-400)	Rabbit	Zfi, Hu, Ma, Ms, Op, Rat	IHC - P, WB	pab72178
TIMP2 (3A4)	Mouse	Zfi, Chick, Hu, Ms, Ma	ELISA, IHC - P, WB	mab71495
Toll-Interacting Protein	Rabbit	Zfi, Hu, Ma, Xe ...	ELISA, IHC, WB	pab0809-P
TPCN1	Rabbit	Zfi	ELISA, WB	pab0907-P
Tubulin Beta Chain [Biotin]	Rabbit	Zfi, Hu, Chick, Ma, Xe ...	WB	pab52172
Tubulin Beta Chain [DyLight 488]	Rabbit	Zfi, Hu, Chick, Ma, Xe ...	WB	pab52174
Tubulin Beta Chain [DyLight 550]	Rabbit	Zfi, Hu, Chick, Ma, Xe ...	WB	pab52176
Tubulin Beta Chain [DyLight 650]	Rabbit	Zfi, Hu, Chick, Ma, Xe ...	WB	pab52173
Tubulin Beta Chain [HRP]	Rabbit	Zfi, Hu, Chick, Ma, Xe ...	WB	pab52175
Two Pore Calcium Channel Protein 2 / TPCN2	Rabbit	Zfi	ELISA, WB	pab0908-P
Two Pore Channel 3 / TPC3	Rabbit	Zfi	ELISA, WB	pab0868-P
Vascular Endothelial Growth Factor A / VEGF-A	Rabbit	Zfi, Hu, Ms, Rat ...	ELISA, IHC, WB	pab0928-P



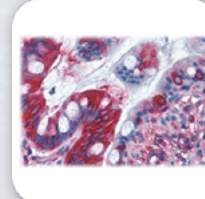
DUSP16
pab72184

Anti-DUSP16 antibody IHC staining of formalin-fixed, paraffin-embedded human testis after heat-induced antigen retrieval. Antibody pab72184, concentration 10 µg/mL.



NF2
pab72351

Anti-NF2 antibody IHC staining of formalin-fixed, paraffin-embedded human brain cortex after heat-induced antigen retrieval. Antibody pab72351, concentration 5 µg/mL.

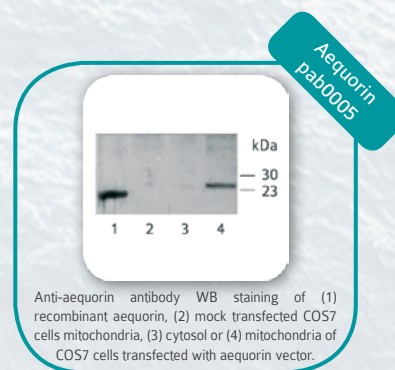


TFG
pab72178

Anti-TFG antibody IHC staining of formalin-fixed, paraffin-embedded human small intestine after heat-induced antigen retrieval. Antibody pab72178, concentration 10 µg/mL.

Antibodies against other marine species proteins

Target	Host	Species	Applications	Cat N°
Aequorin	Rabbit	Jfi	ELISA, WB	pab0005
Cholecystokinin / CCK	Rabbit	Fi, Hu, Fe, Ms, Rab, Rat	FA, ICC, IHC - P	pab75555
Cytochrome P450 11-Beta	Rabbit	<i>Oryzias latipes</i>	ELISA, IHC, WB	pab0356
Cytochrome P450 19A1	Rabbit	<i>Oryzias latipes</i>	ELISA, IHC, WB	pab0357
FAM3C (aa40-80)	Rabbit	Pfi, Hu, Ma, Chick, Ms	IHC - P, WB	pab72183
GAPDH (4G5)	Mouse	Fi, Hu, Ma, Ms, Rat ...	ELISA, IF, IHC - P, IP, WB	mab71545
HSPA1A / HSP72	Rabbit	Fi, Hu, Ma, Ms, Rat ...	ELISA, ICC, IHC - P ...	pab75560
Hypoxia-Inducible Factor-2 alpha / HIF-2alpha	Rabbit	Fi, Hu, Ms, Rat	IHC - P, WB	pab50074
Hypoxia-Inducible Factor-2 alpha [Biotin]	Rabbit	Fi, Hu, Ms, Rat	IHC - P, WB	pab50434
Hypoxia-Inducible Factor-2 alpha [DyLight 488]	Rabbit	Fi, Hu, Ms, Rat	IHC, WB	pab50436
Hypoxia-Inducible Factor-2 alpha [DyLight 550]	Rabbit	Fi, Hu, Ms, Rat	IHC, WB	pab50438
Hypoxia-Inducible Factor-2 alpha [DyLight 650]	Rabbit	Fi, Hu, Ms, Rat	IHC, WB	pab50435
Hypoxia-Inducible Factor-2 alpha [HRP]	Rabbit	Fi, Hu, Ms, Rat	IHC - P, WB	pab50437
Interleukin-12 p35 Subunit	Rabbit	Ffi	ELISA, IHC, WB	pab0309
Interleukin-12 p40 Subunit	Rabbit	Ffi	ELISA, IHC, WB	pab0310
Keyhole Limpet Hemocyanin (KLH) (6D12)	Mouse	<i>Megathura crenulata</i>	ELISA, WB	mab0069-P
Myoglobin Isoform 2	Rabbit	<i>Cyprinus carpio</i>	ELISA, IHC, WB	pab0538
Okadaic Acid	Rabbit	<i>Halichondria okadai</i>	ELISA	pab0021
Okadaic Acid (7E1)	Mouse	<i>Halichondria okadai</i>	ELISA	mab0028-P
Okadaic Acid (7E1) [Alkaline Phosphatase]	Mouse	<i>Halichondria okadai</i>	ELISA	mab0028-AIP
PAR6 (C-terminus)	Rabbit	<i>Phallusia mammillata</i>	ELISA, WB	pab0207
PAR6 (N-terminus)	Rabbit	<i>Phallusia mammillata</i>	ELISA, WB	pab0206
PCNA (Internal)	Rabbit	Fi, Hu, Ma, Chick, Fg ...	ELISA, IHC - P, WB	pab70119
Phospholipase C Delta Isoform / PLCdsu	Rabbit	<i>Strongylocentrotus purpuratus</i>	ELISA, IHC, WB	pab0684
TNNC1	Mouse	Fi, Hu, Ma, Ms, Rat ...	ELISA, IHC - P, WB	mab71144
TNNT2 / CTnT (aa146-160)	Mouse	Fi, Hu, Ma, Ms, Rat ...	ELISA, IHC - P	mab70762
TNNT2 / CTnT (aa70-94)	Mouse	Fi, Hu, Ma, Gt, Ms, Rab	ELISA, IHC - P, IP, WB	mab70764



Applications abbreviations – ELISA: Enzyme-linked immunosorbent assay - FA: Functional assay - FC: Flow cytometry - ICC: Immunocytochemistry - IF: Immunofluorescence - IHC: Immunohistochemistry - IHC-P: Immunohistochemistry, paraffin section - IP: Immunoprecipitation - WB: Western blot. Species abbreviations – Bov: Bovine - Ca: Canine - Chick: Chicken - D. mel.: *Drosophila melanogaster* - Fe: Feline - Ffi: Fugufish - Fg: Frog - Fi: Fish - Gt: Goat - Hu: Human - Jfi: Jellyfish - Ma: Mammals - Mk: Monkey - Ms: Mouse - Op: Opossum - Pfi: Pufferfish - Po: Porcine - Rab: Rabbit - Xe: Xenopus - Zfi: Zebrafish.

Covalab S.A.S. — 11 avenue Albert Einstein 69100 Villeurbanne — France
Phone: +33 (0) 437 654 230 — Fax: +33 (0) 437 289 416
E-mail: enquiries@covalab.com

www.covalab.com