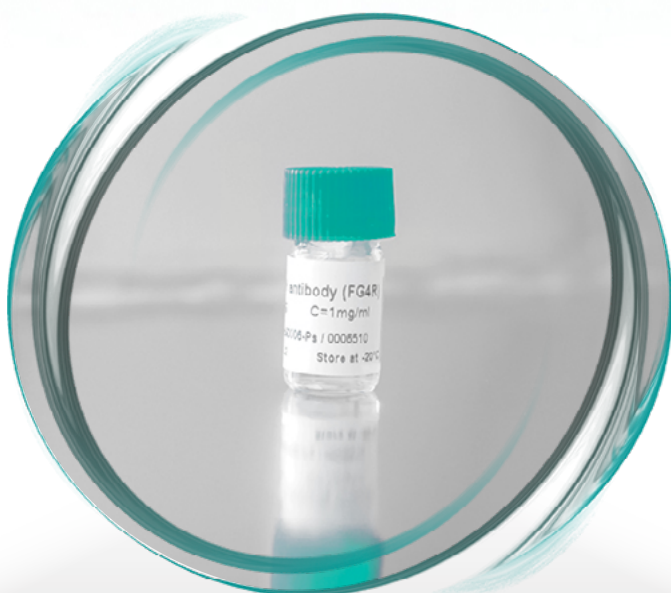


Covalab Products

Anti-DYKDDDDK antibody



Experimental conditions

SAMPLE



Samples of FLAG®-tagged partial TNF α (aa 85-223) were resolved by SDS-PAGE (17% acrylamide) in Tris-Glycine buffer.

ANTIBODIES



M2

Mouse anti-FLAG® epitope, clone M2, 1:1000



FG4R

Mouse anti-DYKDDDDK epitope, clone FG4R, from Covalab, 1:1000



L5

Rat anti-DYKDDDDK epitope, clone L5, from Covalab, 1:1000

FLAG® is a registered trademark of Sigma-Aldrich Biotechnology LP and Sigma-Aldrich Co. LLC

Low Background

IN LOW SATURATION CONDITIONS¹:

M2



FG4R



L5



kDa

— 26

— 17

NO BACKGROUND SIGNAL!

(1) Incubation with 0,5% low-fat milk in PBS, overnight at 4°C; 500 ng of FLAG®-tagged sample.

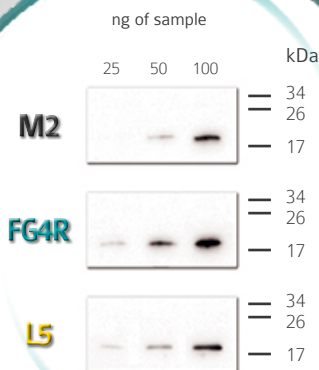
Technical information

Clone	FG4R	L5
Reference	mab90006-P	mab50778
Clonality	Monoclonal	Monoclonal
Isotype	Mouse IgG _{2b}	Rat IgG _{2a}
Immunogen	DYKDDDDK synthetic peptide conjugated to KLH.	N-terminal DYKDDDDK-tagged extracellular domain of mouse Langerin.
Applications*	ICC (1:200 - 1:500)	ICC (1:10 - 1:100)
	IP (3 µg)	IHC (1:50 - 1:100)
	WB (1:1000 - 1:3000)	WB (1:500 - 1:1000)

* Dilutions are given as an indication. Optimal dilution should be determined by the end user.

High Sensitivity

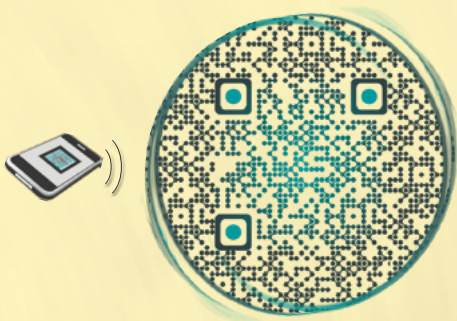
FOR LOW PROTEIN LEVELS:



DOWN TO 25 NG OF PURE PROTEIN DETECTED!

To go further...

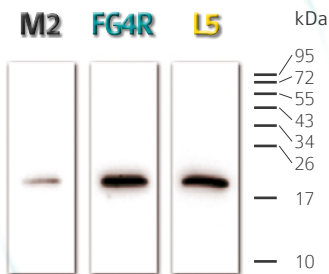
Scan the QR Code to learn more about our anti-DYKDDDDK epitope antibodies.



Download i-nigma QRcode scanner:
<http://www.i-nigma.mobi>

High Specificity

WHEN MIXED WITH WHOLE CELL LYSATE²:



SPECIFIC FOR FLAG[®]-TAGGED PROTEINS!

(2) 100 ng of FLAG[®]-tagged sample mixed with 100 μ g of whole cell lysate.

Western blot analyses do not only rely on the capacity of the primary antibody to bind the protein of interest.

The capacity of the secondary antibody to bind to specific isotypes of immunoglobulins is of great importance as well. Mouse immunoglobulins of isotype IgG_{2b} sometimes prove themselves difficult to bind, and are a noteworthy example of IgG which requires the secondary antibody to have a very high specificity.

Our HRP-conjugated anti-mouse IgG secondary antibody (Cat# lab0252) is very strong at detecting this particular isotype, and gives a significant boost to your experiment when combined with our anti-DYKDDDDK epitope primary antibody.

And to take advantage of an intense and stable light emission for several hours, we recommend to use our exclusive proprietary chemiluminescence reagent Covalight®!

DYKDDDDDK pack



Mouse anti-DYKDDDDK epitope antibody
(mab90006-P)



Goat anti-mouse IgG (H+L) antibody
(lab0252)



Covalight® ECL reagent
(opr0009)

TRY OUR
DYKDDDDDK DETECTION PACK!



More than a partner

Covalab SAS

11 avenue Albert Einstein – 69100 Villeurbanne – FRANCE

Phone: +33(0).437.654.230 – Fax: +33(0).437.289.416