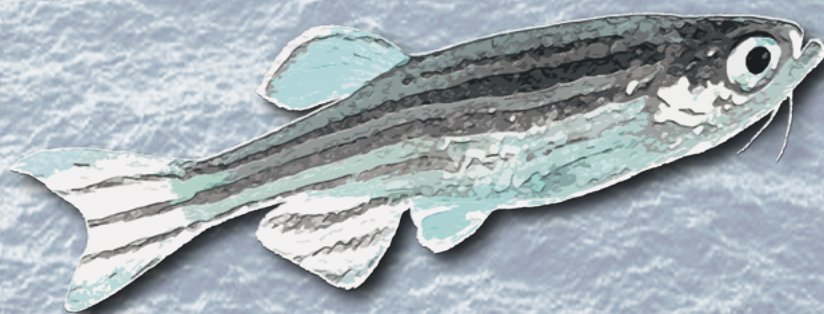




From Research to Discovery

Zebrafish



Marine species-related antibodies from Covalab

Antibodies specific to Zebrafish proteins

ANTIBODY TARGET	HOST	SPECIES	APPLICATIONS	CAT #
14-3-3 β	Rabbit	Zfi, Hu	ICC, IF, IHC - P, WB	pab73313
14-3-3 β	Rabbit	Zfi, Hu	ICC, IF, IHC - P, WB	pab73314
ACTA1 / ASMA	Rabbit	Zfi, Fi, Hu	IHC - P, WB	pab73045
ACTA2	Rabbit	Zfi, Hu, Ms	IHC - P, WB	pab75251
Actin (<i>clone HHF35</i>)	Mouse	Zfi, Fi, Hu, Rat, Rab ...	ELISA, EM, IHC - F, IHC - P, WB	mab20361
AMPD1 (aa140-190)	Rabbit	Zfi, Hu, Ms, Rat, Ca, Ma	IHC - P, WB	pab72198
AMPD1 (aa500-550)	Rabbit	Zfi, Hu, Ms, Rat, Mk, Bov	IHC - P, WB	pab72199
ATG4B	Rabbit	Zfi, Hu, Ma, Chick, Xe	IHC - P, WB	pab74475
ATG5	Rabbit	Zfi, Hu, Ms, Rat, Mk, Xe	ICC, IF, IHC - P, WB	pab50264
ATG5	Rabbit	Zfi, Pfi, Hu, Ms, Rat, Ma	IF, IHC - P	pab72230
ATG5 [Biotin]	Rabbit	Zfi, Hu, Ms, Rat ...	IHC, WB	pab51215
ATG5 [HRP]	Rabbit	Zfi, Hu, Ms, Rat ...	ICC, IHC, WB	pab51218
ATG5 [DyLight 488]	Rabbit	Zfi, Hu, Ms, Rat ...	IHC, WB	pab51217
ATG5 [DyLight 550]	Rabbit	Zfi, Hu, Ms, Rat ...	IHC, WB	pab51219
ATG5 [DyLight 650]	Rabbit	Zfi, Hu, Ms, Rat ...	IHC, WB	pab51216

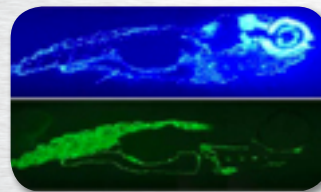
Actin
mab20361

Anti-actin antibody IF staining of muscle tissue in the tail of 3-day old zebrafish embryo.



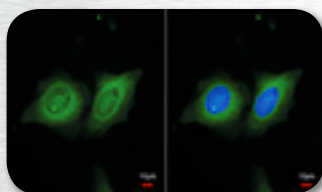
Actin
mab20361

Anti-actin antibody IF staining (bottom) of 7-day old zebrafish embryo. Cell nuclei were stained using DAPI (top).



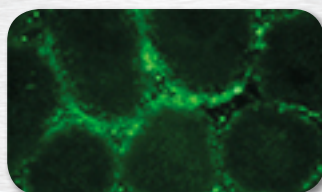
ANTIBODY TARGET	HOST	SPECIES	APPLICATIONS	CAT #
CAAX prenyl protease 1 homolog	Rabbit	Zfi, Hu, Ms, Mk	WB	pab50234
CASK (<i>clone S56A-50</i>)	Mouse	Zfi, Hu, Ms, Rat, Xe	IHC, WB	mab60061
Collagen alpha-3 (IV) chain (COL4A3)	Rabbit	Zfi, Hu, Ms	ELISA, IHC, WB	pab0412
Collagen alpha-3 (IV) chain (COL4A3)	Rabbit	Zfi, Hu, Ms	ELISA, IHC, WB	pab0412-P
CRTC1 / MECT1 (aa19-34)	Rabbit	Zfi, Hu, Ms, Rat, Bov	ELISA, IHC - P, WB	pab70092
Cxcr4B	Rabbit	Zfi	ELISA, IF, WB	pab0736
CYP1B1 (aa200-250)	Rabbit	Zfi, Hu, Ms, Rat, Op, Ma	IHC - P, WB	pab72196
DACT1 (aa725-775)	Rabbit	Zfi, Hu, Ma, Chick, Xe	IHC - P, WB	pab74661
DCC (aa1437-1447)	Goat	Zfi, Hu, Ms, Rat, Oth	IHC - P	pab73546

14-3-3 β
pab73314



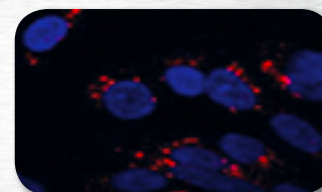
Anti-14-3-3 β antibody IF staining of paraformaldehyde-fixed HeLa.

ATG5
pab72230



Anti-ATG5 antibody IF staining of adult mouse testis.

ATG5
pab50264



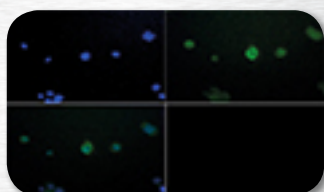
Anti-ATG5 antibody ICC staining of SY5Y cells.

Antibodies specific to Zebrafish proteins (continued)

ANTIBODY TARGET	HOST	SPECIES	APPLICATIONS	CAT #
Diacylglycerol O-acyltransferase 1 [Biotin]	Rabbit	Zfi, Hu, Ms, Rat, Bov	WB	pab51165
Diacylglycerol O-acyltransferase 1 [HRP]	Rabbit	Zfi, Hu, Ms, Rat, Bov	WB	pab51168
Diacylglycerol O-acyltransferase 1 [DyLight 488]	Rabbit	Zfi, Hu, Ms, Rat, Bov	WB	pab51167
Diacylglycerol O-acyltransferase 1 [DyLight 550]	Rabbit	Zfi, Hu, Ms, Rat, Bov	WB	pab51169
Diacylglycerol O-acyltransferase 1 [DyLight 650]	Rabbit	Zfi, Hu, Ms, Rat, Bov	WB	pab51166
DNMT1 (<i>clone 4G11-C7</i>)	Mouse	Zfi, Hu, Ms	ELISA, WB	mab60115
DUSP16 (aa600-650)	Rabbit	Zfi, Hu, Ms, Ma, Chick	IHC - P, WB	pab72184
EPHB2 (Internal)	Rabbit	Zfi, Hu, Ms, Rat, Oth	IHC - P	pab70910
Fibrinogen	Rabbit	Zfi	ELISA, WB	pab0992-P
Fibrinogen (α chain)	Rabbit	Zfi	ELISA, WB	pab0999-P
FOXO1 (C-Terminus)	Goat	Zfi, Hu, Ms, Mk, Xe	ELISA, IHC - P, WB	pab72593
FTFSDC1 / MTHFD1L (Internal)	Goat	Zfi, Hu, Ms, Rat, Rab ...	ELISA, IHC - P, WB	pab76203
GPR22 (Cytoplasmic Domain)	Rabbit	Zfi, Hu, Chick, Oth	IHC - P	pab71237
GPR85 (Extracellular Domain)	Rabbit	Zfi, Hu, Ms, Rat, Oth	IHC - P	pab71375
GRK5	Rabbit	Zfi, Pfi, Hu, Ma, Chick	IHC - P, WB	pab72201
High affinity copper uptake protein 1	Rabbit	Zfi, Hu, Ms, Rat, Po, Xe	IHC - P	pab50112
High affinity copper uptake protein 1 [Biotin]	Rabbit	Zfi, Hu, Ms, Rat, Po, Xe	IHC - P	pab50871
High affinity copper uptake protein 1 [HRP]	Rabbit	Zfi, Hu, Ms, Rat, Po, Xe	IHC - P	pab50874
High affinity copper uptake protein 1 [DyLight 488]	Rabbit	Zfi, Hu, Ms, Rat, Po, Xe	IHC - P	pab50873
High affinity copper uptake protein 1 [DyLight 550]	Rabbit	Zfi, Hu, Ms, Rat, Po, Xe	IHC - P	pab50875
High affinity copper uptake protein 1 [DyLight 650]	Rabbit	Zfi, Hu, Ms, Rat, Po, Xe	IHC - P	pab50872
Histone H2B (aa111-125)	Rabbit	Zfi, Hu, Ma, D. mel., Oth	IHC - P, WB	pab74509
Histone H4 (aa15-30)	Rabbit	Zfi, Hu, D. mel., Xe, Oth	IHC - P, WB	pab74510
HSP90B1 / GRP94 (aa590-640)	Rabbit	Zfi, Hu, Ma, Chick, Xe	IHC - P, WB	pab74472
JMJD6	Rabbit	Zfi, Hu, Ms, Rat, Bov, Xe	ICC, WB	pab52834
KDM1A / LSD1 (aa100-150)	Rabbit	Zfi, Hu, Ms, Rat, Mk, Ca	IHC - P, WB	pab72287
Kv1 K ⁺ channel	Rabbit	Zfi, Hu, Ms, Rat ...	IP, WB	pab52451
Kv1 K ⁺ channel [HRP]	Rabbit	Zfi, Hu, Ms, Rat ...	IP, WB	pab52455
Kv1 K ⁺ channel [DyLight 488]	Rabbit	Zfi, Hu, Ms, Rat ...	IP, WB	pab52454
Kv1 K ⁺ channel [DyLight 550]	Rabbit	Zfi, Hu, Ms, Rat ...	IP, WB	pab52456
Kv1 K ⁺ channel [DyLight 650]	Rabbit	Zfi, Hu, Ms, Rat ...	IP, WB	pab52453
Kv1.2 K ⁺ channel (<i>clone S14-16</i>)	Mouse	Zfi, Hu, Ms, Rat, Xe	FC, ICC, IF, IHC, IP, WB	mab60309
Kv1.2 K ⁺ channel	Rabbit	Zfi, Hu, Ms, Rat ...	ICC, WB	pab52458
Kv1.2 K ⁺ channel [Biotin]	Rabbit	Zfi, Hu, Ms, Rat ...	ICC, WB	pab52459
Kv1.2 K ⁺ channel [HRP]	Rabbit	Zfi, Hu, Ms, Rat ...	ICC, WB	pab52462
Kv1.2 K ⁺ channel [DyLight 488]	Rabbit	Zfi, Hu, Ms, Rat ...	ICC, WB	pab52461
Kv1.2 K ⁺ channel [DyLight 550]	Rabbit	Zfi, Hu, Ms, Rat ...	ICC, WB	pab52463
Kv1.2 K ⁺ channel [DyLight 650]	Rabbit	Zfi, Hu, Ms, Rat ...	ICC, WB	pab52460
Kv β 2 K ⁺ channel (<i>clone S17-70</i>)	Mouse	Zfi, Hu, Ms, Rat	ICC, IF, IHC, WB	mab60324
Lamin B1 (<i>clone 119D5-F1</i>)	Mouse	Zfi, Hu, Ms, Rat ...	ELISA, FC, ICC, IHC - F, WB	mab71735
Lamin B2 (<i>clone LN43</i>)	Mouse	Zfi, Hu, Ms, Ham, Po, Xe	FC, IHC - F, WB	mab71732

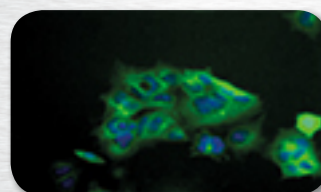
JMJD6 pab52834

Anti-JMJD6 antibody
IF staining of A431
cells. Nuclei were
counterstained using
Dapi (blue).



Kv1.2 pab52458

Anti-Kv1.2 antibody
ICC staining of HEK293
cells. Nuclei were
counterstained using
Hoechst 33258.



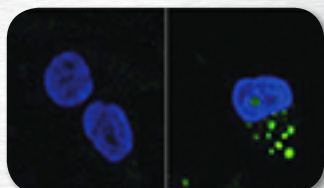
Other species abbreviations - Ba: Bacteria - Bov: Bovine - Ca: Canine - Chick: Chicken - D. mel.: *Drosophila melanogaster* - F. fi: Fugu fish - Fe: Feline - Ft: Fish - Gt: Goat - Ham: Hamster - Hu: Human - Jfi: Jellyfish - Ma: Mammals - Mk: Monkey - Ms: Mouse - Op: Opossum - Oth: Other - Pfi: Pufferfish - Pt: Plants - Po: Porcine - Rab: Rabbit - Sh: Sheep - Xe: Xenopus - Ye: Yeast - Zfi: Zebrafish.

Antibodies specific to Zebrafish proteins (continued)

ANTIBODY TARGET	HOST	SPECIES	APPLICATIONS	CAT #
LC3A (N-terminus)	Rabbit	Zfi, Hu, Ms, Rat, Bov	FC, ICC, IF, IHC, WB	pab52327
LC3A (aa25-121)	Rabbit	Zfi, Hu, Ms, Rat, Pl	ICC, IF, IHC - P, IP, WB	pab50207
LC3A (aa25-121) [Biotin]	Rabbit	Zfi, Hu, Ms, Rat	IHC - P, IHC - F, IP, WB	pab50670
LC3A (aa25-121) [HRP]	Rabbit	Zfi, Hu, Ms, Rat	IHC, IHC - P, IP, WB	pab50673
LC3A (aa25-121) [DyLight 488]	Rabbit	Zfi, Hu, Ms, Rat	IHC, IHC - P, IP, WB	pab50672
LC3A (aa25-121) [DyLight 550]	Rabbit	Zfi, Hu, Ms, Rat	IHC, IHC - P, IP, WB	pab50674
LC3A (aa25-121) [DyLight 650]	Rabbit	Zfi, Hu, Ms, Rat	IHC, IHC - P, IP, WB	pab50671
LC3B (N-terminus) [Biotin]	Rabbit	Zfi, Hu, Ms, Rat, Bov	ICC, IF, IHC, WB	pab52099
LC3B (N-terminus) [HRP]	Rabbit	Zfi, Hu, Ms, Rat, Bov	ICC, IF, IHC - F, IHC, WB	pab52102
LC3B (N-terminus) [DyLight 488]	Rabbit	Zfi, Hu, Ms, Rat, Bov	ICC, IF, IHC, WB	pab52101
LC3B (N-terminus) [DyLight 550]	Rabbit	Zfi, Hu, Ms, Rat, Bov	ICC, IF, IHC, WB	pab52103
LC3B (N-terminus) [DyLight 650]	Rabbit	Zfi, Hu, Ms, Rat, Bov	ICC, IF, IHC, WB	pab52100
LC3B (aa1-100)	Rabbit	Zfi, Hu, Ms, Rat, Bov, Ba	FC, ICC, IF, IHC, IP, WB	pab50206
LC3B (aa1-100) [Biotin]	Rabbit	Zfi, Hu, Ms, Rat, Bov, Ba	IHC, IHC - P, IP, WB	pab50623
LC3B (aa1-100) [HRP]	Rabbit	Zfi, Hu, Ms, Rat, Bov, Ba	IHC, IHC - P, IP, WB	pab50626
LC3B (aa1-100) [DyLight 488]	Rabbit	Zfi, Hu, Ms, Rat, Bov, Ba	IHC, IHC - P, IP, WB	pab50625
LC3B (aa1-100) [DyLight 550]	Rabbit	Zfi, Hu, Ms, Rat, Bov, Ba	IHC, IHC - P, IP, WB	pab50627
LC3B (aa1-100) [DyLight 650]	Rabbit	Zfi, Hu, Ms, Rat, Bov, Ba	IHC, IHC - P, IP, WB	pab50624

LC3B
pab52102

Anti-LC3B antibody
ICC staining of U373-MG
cells. Nuclei were
counterstained using
DAPI (blue).


KCNMA1
mab60474

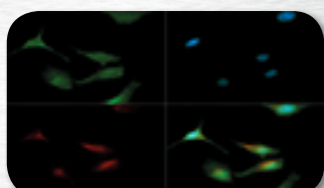
Anti-KCNMA1 antibody
IHC staining of mouse
cerebellum.



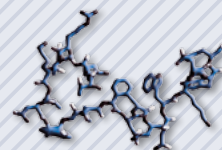
ANTIBODY TARGET	HOST	SPECIES	APPLICATIONS	CAT #
LPCAT1 (Internal)	Rabbit	Zfi, Hu, Rat, Oth	IHC - P	pab71649
MAF (aa50-100)	Rabbit	Zfi, Hu, Ms, Chick, Xe	IHC - P, WB	pab72200
MAP1LC3A (aa1-50)	Rabbit	Zfi, Hu, Ms, Rat, Bov, Op	IHC - P, WB	pab74434
MARCH4 (aa300-350)	Rabbit	Zfi, Hu, Ms, Rat, Chick	IHC - P, WB	pab72188
MCT1 (aa3-14)	Rabbit	Zfi, Hu, Ms, Chick, Oth	ELISA, IHC - P, WB	pab71719
Merlin / NF2 (Internal)	Goat	Zfi, Hu	ELISA, IHC - P	pab72351
MICU1 / CBARA1 (Internal)	Goat	Zfi, Hu, Ms, Rat, Rab ...	ELISA, IHC - P, WB	pab76186
MLL4 (C-Terminus)	Goat	Zfi, Hu, Ms, Rat, Mk, Oth	ELISA, IHC - P	pab72784
MORF4L1 / MRG15 (N-Terminus)	Goat	Zfi, Hu, Ms, Rat, Oth	ELISA, IHC - P	pab72786
Na ⁺ /K ⁺ ATPase alpha-1 subunit (clone A1F6)	Mouse	Zfi, Hu, Ms, Rat, Chick	IHC, IP, WB	mab0102-P
Na ⁺ - and Cl ⁻ -dependent GABA transporter 2	Rabbit	Zfi, Hu, Ms, Rat	ELISA, IHC, WB	pab0016

LC3A
pab50207

Anti-LC3A antibody
ICC/IF staining of
HeLa cells. Nuclei and
alpha-tubulin were
counterstained using
DAPI (blue) and DyLight
550 (red) respectively.


LC3B
blocking peptide

Use the LC3B blocking peptide to reveal
the specific staining of the anti-LC3B
antibody (Cat# pab50206).


SPECIES

Zfi, Hu, Ms, Rat ...

APPLICATIONS

IHC, IHC - P, WB

CAT #

pep50016

Antibodies specific to Zebrafish proteins (continued)

ANTIBODY TARGET	HOST	SPECIES	APPLICATIONS	CAT #
NTN1 / Netrin 1 (C-Terminus)	Goat	Zfi, Hu, Ms, Rat, Xe, Oth	ELISA, IHC - P, WB	pab73827
ORC3L / ORC3 (C-Terminus)	Goat	Zfi, Hu, Ms, Rat, Rab ...	ELISA, IHC - P, WB	pab76086
P540 Aromatase (Cyp19b)	Rabbit	Zfi	ELISA, IHC, WB	pab0693
P540 Aromatase (Cyp19b)	Rabbit	Zfi	ELISA, IHC, WB	pab0693-IP
Paired box protein Pax-6	Rabbit	Zfi, Hu, Ms, Rat, Xe	ELISA, WB	pab0831-P
pan-MAGUK (<i>clone S28-86</i>)	Mouse	Zfi, Hu, Ms, Rat, Xe	IHC, WB	mab60395
PARK7 / DJ-1 (aa177-189)	Rabbit	Zfi, Hu, Mk	ELISA, IHC - P, WB	pab70048
PPAR Delta (aa430-441)	Goat	Zfi, Hu, Ms, Rat ...	ELISA, IHC - P, WB	pab72933
PXN / Paxillin (Tyr118)	Rabbit	Zfi, Hu, Ms, Rat ...	IHC - P, WB	pab73081
RAB7 (aa90-140)	Rabbit	Zfi, Hu, Ma, Chick, Xe	IHC - P, WB	pab72181
RNF7 (Internal)	Goat	Zfi, Hu, Ms, Rat ...	ELISA, IHC - P, WB	pab75828
RPL23 / L23 (C-Terminus)	Goat	Zfi, Hu, Rab, Ham ...	ELISA, IHC - P, WB	pab76461
Slo1 K+ Channel (<i>clone S6-60</i>)	Mouse	Zfi, Hu, Ms, Rat	FC, ICC, IF, IHC, IP, WB	mab60474
SNX27	Rabbit	Zfi, Hu, Ms, Rat, Bov	ICC, IF, IHC - P, WB	pab52551
SNX27 [Biotin]	Rabbit	Zfi, Hu, Ms, Rat, Bov	ICC, WB	pab52552
SNX27 [HRP]	Rabbit	Zfi, Hu, Ms, Rat, Bov	ICC, WB	pab52555
SNX27 [DyLight 488]	Rabbit	Zfi, Hu, Ms, Rat, Bov	ICC, IF, WB	pab52554
SNX27 [DyLight 550]	Rabbit	Zfi, Hu, Ms, Rat, Bov	ICC, IF, WB	pab52556
SNX27 [DyLight 650]	Rabbit	Zfi, Hu, Ms, Rat, Bov	ICC, IF, WB	pab52553
SOX17 (aa70-120)	Rabbit	Zfi, Hu, Ms, Rat ...	IHC - P, WB	pab75519
STRAP (aa230-280)	Rabbit	Zfi, Hu, Ms, Ma, Xe, Oth	IHC - P, WB	pab74471
TARBP2 (aa150-200)	Rabbit	Zfi, Hu, Ms, Rat, Mk, Bov	IHC - P, WB	pab72293
TARDBP	Rabbit	Zfi, Hu, Ms, Mk, Chick, Xe	ICC, IF, IHC, WB	pab50273
TARDBP [Biotin]	Rabbit	Zfi, Hu, Ms, Mk, Chick, Xe	WB	pab51257
TARDBP [HRP]	Rabbit	Zfi, Hu, Ms, Mk, Chick, Xe	WB	pab51260
TARDBP [DyLight 488]	Rabbit	Zfi, Hu, Ms, Mk, Chick, Xe	WB	pab51259
TARDBP [DyLight 550]	Rabbit	Zfi, Hu, Ms, Mk, Chick, Xe	WB	pab51261
TARDBP [DyLight 650]	Rabbit	Zfi, Hu, Ms, Mk, Chick, Xe	WB	pab51258
TFG (aa350-400)	Rabbit	Zfi, Hu, Ms, Rat, Op, Ma	IHC - P, WB	pab72178
TIMP2 (<i>clone 3A4</i>)	Mouse	Zfi, Hu, Ms, Ma, Chick	ELISA, IHC - P, WB	mab71495
Toll-interacting protein	Rabbit	Zfi, Hu, Ms, Rat, Bov, Xe	ELISA, IHC, WB	pab0809-P
Tpcn1	Rabbit	Zfi	ELISA, WB	pab0907-P
Tubulin β chain [Biotin]	Rabbit	Zfi, Hu, Ms, Rat ...	WB	pab52172
Tubulin β chain [HRP]	Rabbit	Zfi, Hu, Ms, Rat ...	WB	pab52175
Tubulin β chain [DyLight 488]	Rabbit	Zfi, Hu, Ms, Rat ...	WB	pab52174
Tubulin β chain [DyLight 550]	Rabbit	Zfi, Hu, Ms, Rat ...	WB	pab52176
Tubulin β chain [DyLight 650]	Rabbit	Zfi, Hu, Ms, Rat ...	WB	pab52173
Two pore calcium channel protein 2 (tpcn2)	Rabbit	Zfi	ELISA, WB	pab0908-P
Two pore channel 3 (TPC3)	Rabbit	Zfi	ELISA, WB	pab0868-P
VEGF165	Rabbit	Zfi, Hu, Ms, Rat, Oth	ELISA, IHC, WB	pab0928-P

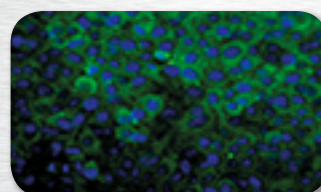
TARDBP pab50273

Anti-TARDBP antibody ICC staining (green) of MCF-7 cells. Nuclei and alpha-tubulin were counterstained using DAPI (blue) and DyLight 550 (red), respectively.



SNX27 pab52551

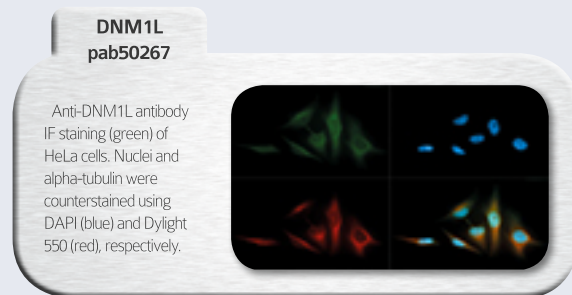
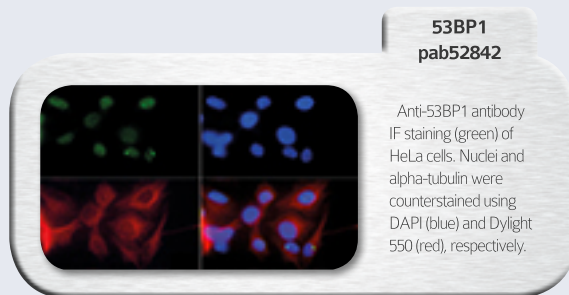
Anti-SNX27 antibody IF staining (green) of HeLa cells. Nuclei were counterstained using DAPI (blue).



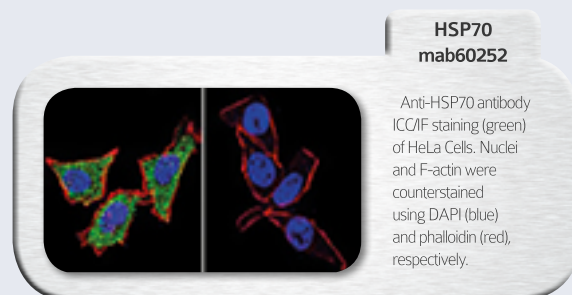
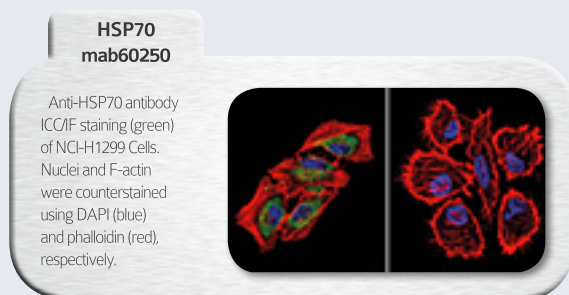
Other species abbreviations - Ba: Bacteria - Bov: Bovine - Ca: Canine - Chick: Chicken - D. mel.: *Drosophila melanogaster* - F. fi: Fugu fish - Fe: Feline - Fi: Fish - Gt: Goat - Ham: Hamster - Hu: Human - Jfi: Jellyfish - Ma: Mammals - Mk: Monkey - Ms: Mouse - Op: Opossum - Oth: Other - Pfi: Pufferfish - Pl: Plants - Po: Porcine - Rab: Rabbit - Sh: Sheep - Xe: Xenopus - Ye: Yeast - Zfi: Zebrafish.

Antibodies specific to common fish proteins

ANTIBODY TARGET	HOST	SPECIES	APPLICATIONS	CAT #
53BP1	Rabbit	Fi, Hu, Ms, Rat, Gt, Mk	ChIP, FC, ICC, IF, IHC, IP, WB	pab52842
Aequorin	Rabbit	Jfi	ELISA, WB	pab0005
CNGA 1/3 (clone S36-12)	Mouse	Fi, Ms, Rat	ICC, IF, IHC, WB	mab60100
Dynamin-1-like protein	Rabbit	Fi, Hu, Ms, Rat, Mk, Bov	ICC, IF, IHC, IP, WB	pab50267
FAM3C (aa40-80)	Rabbit	Pfi, Hu, Ms, Ma, Chick	IHC - P, WB	pab72183
GAPDH (clone 4G5)	Mouse	Fi, Hu, Ms, Rat ...	ELISA, IF, IHC - F, IHC - P, IP, WB	mab71953
GAPDH (clone 6C5)	Mouse	Fi, Hu, Ms, Rat ...	ELISA, IF, IHC - F, IHC - P, IP, WB	mab71928
Hsp70 (clone 2A4)	Mouse	Fi, Hu, Chick ...	FC, ICC, IF, IHC, IP, WB	mab60250
Hsp70 (clone 3A3)	Mouse	Fi, Hu, Chick ...	ICC, IF, IHC, IP, WB	mab60251
Hsp70 (clone 5A5)	Mouse	Fi, Hu, Chick ...	FC, ICC, IF, IHC, IP, WB	mab60252
Hsp70	Rabbit	Fi, Hu, Ms, Rat, Ma	IP, WB	pab60169
Hsp70/Hsc70 (clone BB70)	Mouse	Fi, Ma, Chick, Xe, Ye	IHC, WB	mab60255
Hsp70/Hsc70 (clone N27F3-4)	Mouse	Fi, Ma, Chick, Xe, D. mel.	FC, IHC, IP, WB	mab60256
HSPA1A / HSP72	Rabbit	Fi, Hu, Ms, Rat, Bov, Ma	ELISA, ICC, IHC - P, IP, WB	pab75560



ANTIBODY TARGET	HOST	SPECIES	APPLICATIONS	CAT #
Hypoxia inducible factor-2 alpha	Rabbit	Fi, Hu, Ms, Rat	ChIP, ELISA, FC, GS, ICC, IF, IHC, IP, WB	pab50074
Hypoxia-inducible factor 2-alpha [Biotin]	Rabbit	Fi, Hu, Ms, Rat	IHC, WB	pab50434
Hypoxia-inducible factor 2-alpha [HRP]	Rabbit	Fi, Hu, Ms, Rat	IHC - P, WB	pab50437
Hypoxia-inducible factor 2-alpha [DyLight 488]	Rabbit	Fi, Hu, Ms, Rat	IHC, IHC - P, WB	pab50436
Hypoxia-inducible factor 2-alpha [DyLight 550]	Rabbit	Fi, Hu, Ms, Rat	IHC, IHC - P, WB	pab50438
Hypoxia-inducible factor 2-alpha [DyLight 650]	Rabbit	Fi, Hu, Ms, Rat	IHC, IHC - P, WB	pab50435

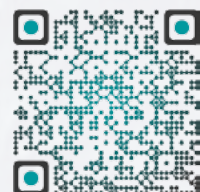


To go further ...



Scan the QRcode to learn more about Zebrafish products!

Download i-nigma QRcode scanner: <http://www.i-nigma.mobi>



Antibodies specific to common fish proteins (continued)

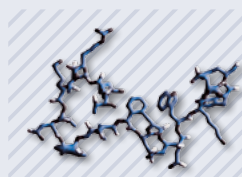
ANTIBODY TARGET	HOST	SPECIES	APPLICATIONS	CAT #
Interleukin-12 (p35 subunit)	Rabbit	F. fi	ELISA, IHC, WB	pab0309
Interleukin-12 (p40 subunit)	Rabbit	F. fi	ELISA, IHC, WB	pab0310
PCNA (Internal)	Rabbit	Fi, Hu, Ms, Rat, Xe, Oth	ELISA, IHC - P, WB	pab70119
Rhodopsin (<i>clone 4D2</i>)	Mouse	Fi, Hu, Ma, Chick, Xe	FC, IHC, IP, WB	mab60459
TNNC1	Mouse	Fi, Hu, Ms, Rat, Rab, Ma	ELISA, IHC - P, WB	mab71144
TNNT2 / CTnT (aa146-160)	Mouse	Fi, Hu, Ms, Rat, Rab, Ma	ELISA, IHC - P	mab70762
Tumor suppressor p53-binding protein 1 (53BP1) [Biotin]	Rabbit	Fi, Hu, Ms, Rat, Gt, Mk	FC, ICC, WB	pab50823
Tumor suppressor p53-binding protein 1 (53BP1) [HRP]	Rabbit	Fi, Hu, Ms, Rat, Gt, Mk	FC, ICC, WB	pab50826
Tumor suppressor p53-binding protein 1 (53BP1) [DyLight 488]	Rabbit	Fi, Hu, Ms, Rat, Gt, Mk	FC, ICC, WB	pab50825
Tumor suppressor p53-binding protein 1 (53BP1) [DyLight 550]	Rabbit	Fi, Hu, Ms, Rat, Gt, Mk	FC, ICC, WB	pab50827
Tumor suppressor p53-binding protein 1 (53BP1) [DyLight 650]	Rabbit	Fi, Hu, Ms, Rat, Gt, Mk	FC, ICC, WB	pab50824
Ubiquitin	Rabbit	Fi, Ma, Chick, Xe, D. mel.	WB	pab60334
Ubiquitin	Rabbit	Fi, Ma, Chick, Xe, Ye	IHC - P, ICC, IP, WB	pab75564

Cytochrome-C ELISA kit

TARGET	SPECIES	APPLICATIONS	CAT #
Cytochrome-C	Fi	ELISA	kit20070

Antibodies specific for other marine species

ANTIBODY TARGET	HOST	SPECIES	APPLICATIONS	CAT #
Cytochrome P450 11-β	Rabbit	<i>Oryzias latipes</i>	ELISA, IHC, WB	pab0356
Cytochrome P450 19A1	Rabbit	<i>Oryzias latipes</i>	ELISA, IHC, WB	pab0357
Keyhole Limpet Hemocyanin (<i>clone 6D12</i>)	Mouse	<i>Megathura crenulata</i>	ELISA, WB	mab0069-P
Myoglobin (isoform 2)	Rabbit	<i>Cyprinus carpio</i>	ELISA, IF, WB	pab0538
Okadaic acid	Rabbit	<i>Halicohondria okadai</i>	ELISA	pab0021
Okadaic acid (<i>clone 7E1</i>)	Mouse	<i>Halicohondria okadai</i>	ELISA	mab0028-P
Okadaic acid (<i>clone 7E1</i>) [Alkaline phosphatase]	Mouse	<i>Halicohondria okadai</i>	ELISA	mab0028-AIP
PAR6 (C-terminus)	Rabbit	<i>Phallusia mammillata</i>	ELISA, WB	pab0207
PAR6 (N-terminus)	Rabbit	<i>Phallusia mammillata</i>	ELISA, WB	pab0206
Phospholipase C (δ isoform)	Rabbit	<i>Strongylocentrotus purpuratus</i>	ELISA, IHC, WB	pab0684



**Cytochrome P450 11-β
blocking peptide**

Use the Cytochrome P450 11-β blocking peptide to reveal the specific staining of the anti-Cytochrome P450 11-β antibody (Cat# pab0356).

SPECIES	APPLICATIONS	CAT #
O. lati.	ELISA, WB	pep0356

Covalab, more than a partner

Custom Services

Custom Polyclonal Antibodies Development

Anti-Protein
Anti-Peptide
Anti-Post-Translational Modification

Custom Monoclonal Antibodies Development

Monoclonal Antibodies Production

In vivo
In vitro

Peptide Synthesis

Antibody Purification

Biomolecule Labelling

Development of Immunoaffinity Supports (columns)

Functionalisation of Solid Phases (microtitration plates)



From Research to Discovery

Our range of products constantly increases, but if you don't find the antibody you're looking for in our catalog, we can develop it for you. Our services will allow you to create a custom antibody that meets your needs.

So contact us by phone at +33(0) 437.654.230 or submit your enquiries at: enquiries@covalab.com.

Covalab

11 avenue Albert Einstein
69100 VILLEURBANNE - FRANCE
Phone: +33(0) 437.654.230 — Fax: +33(0) 437.289.416
E-mail for information: enquiries@covalab.com
E-mail for order: orders@covalab.com
Web: www.covalab.com