

TG2-CovTest

Specific Tissue Transglutaminase 2 (TG2/tTG) Colorimetric Microassay Kit (opr0030)

COVALAB, your partner in TGase research, introduces an innovative TG2 (tTG) specific assay "TG2-CovTest". This new colorimetric assay (recently published [1]) is designed for the quantitative determination of specific TG2 crosslinking activity in purified enzyme preparations, in crude homogenates from cells and tissues...

FEATURES

- Measurement of TG2 activity without any interference from other TGs
- No prior isolation of the enzyme
- High sensitivity (equivalent to radiometric method)
- Rapidity (3 steps in 30 min)
- Simultaneous screening using 8-96 well strips

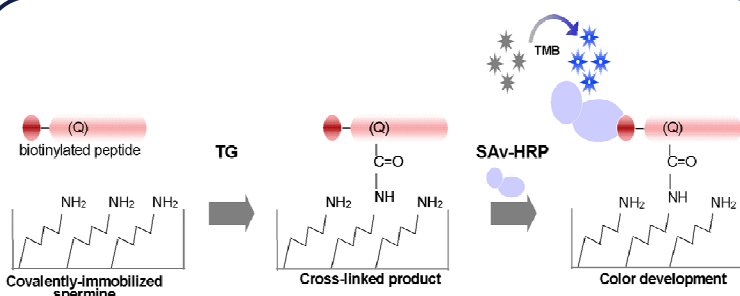


FIGURE 1: Schematic representation of the principle of the kit.

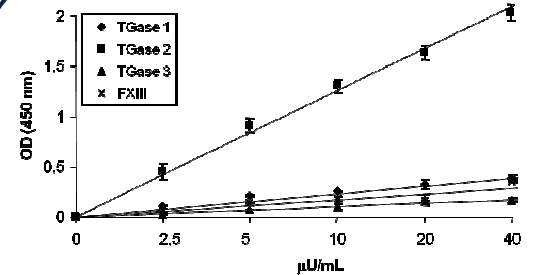


FIGURE 2: Comparison between different isoforms after correlation of units using radiometric assay.

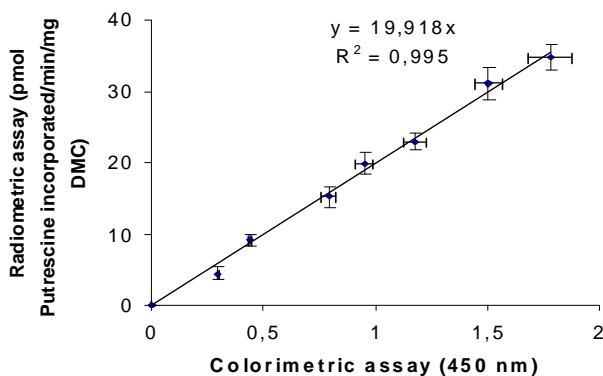


FIGURE 3: Comparison between the TG2CovTest assay and the Radiometric assay on different extract.

	TG2 colorimetric assay	TG2 radiometric assay
Recombinant human TGase 2	< 4 ng	10 ng
Purified guinea pig TGase 2	< 5 ng	-
Mouse embryonic fibroblast (MEF cells)	6 ng	18 ng
Guinea pig crude liver extracts	1,25 μg	5 μg

Related Products

Others Products

Product	Prod. N°
Transglutaminase Colorimetric Microassay Kit	opr0001
mAb to Nε (γ-L-glutamyl)-L-lysine isopeptide coupled to agarose beads	opr0003
Recombinant human Transglutaminase 2 (TG2/tTG)	opr0027

Monoclonal Antibodies

Product	Isotype	Clone	Specificity	Application	Prod. N°	Size
mAb to Nε (γ-L-glutamyl)-L-lysine isopeptide	IgG2a / Kappa	Cov71A3G4	all species	ELISA, IHC	mab0009-0	100µL
					mab0009-1	200µL
mAb to Nε (γ-L-glutamyl)-L-lysine isopeptide	IgG1 / Kappa	Cov81D1C2	all species	ELISA, IHC	mab0011-0	100µL
					mab0011-1	200µL
mAb to Nε (γ-L-glutamyl)-L-lysine isopeptide	IgM / Kappa	Cov81D4	all species	ELISA, IHC	mab0012-0	100µL
					mab0012-1	200µL
mAb to Transglutaminase 2 (TG2/tTG)	IgG3 / Kappa	Cov7D2	all species	ELISA, IHC, WB	mab0024-0	100µL
					mab0024-1	200µL
mAb to Transglutaminase 3 (TG3/eTG)	IgG1 / Kappa	CovH3	Human	ELISA, IHC, WB	mab0046-0	100µL
					mab0046-1	200µL
mAb to Transglutaminase 3 (TG3/eTG)	IgG1 / Kappa	CovC2D	Human	ELISA, IHC, WB	mab0057-0	100µL
					mab0057-1	200µL
mAb to Epidermal Transglutaminase 3 (Tgase 3)	IgG1 / Kappa	CovB5D	Human	ELISA, IHC, WB	mab0058-0	100µL
					mab0058-1	200µL

Polyclonal Antibodies

Product	Species	Specificity	Application	Prod. N°	Size
pAb to Transglutaminase (Cellular / Tissue)	Rabbit	all species	ELISA, WB, IHC	pab0024-0	100µL
				pab0024-1	200µL
pAb to Plasmatic Transglutaminase (FXIII)	Rabbit	Human	ELISA, WB, IHC	pab0058-0	100µL
				pab0058-1	200µL
pAb to Plasmatic Transglutaminase (FXIII) Immunopurified	Rabbit	Human	ELISA, WB, IHC	pab0059	25µg
pAb to Transglutaminase 1 (TG1)	Rabbit	Human	ELISA, WB, IHC	pab0060-0	100µL
				pab0060-1	200µL
pAb to Transglutaminase 1 (TG1) Immunopurified	Rabbit	Human	ELISA, WB, IHC	pab0061	25µg
pAb to Transglutaminase 2 (TG2/tTG)	Rabbit	Human	ELISA, WB, IHC	pab0062-0	100µL
				pab0062-1	200µL
pAb to Transglutaminase 2 (TG2/tTG) Immunopurified	Rabbit	Human	ELISA, WB, IHC	pab0063	25µg
pAb to Transglutaminase 3 (TG3/eTG)	Rabbit	Human	ELISA, WB, IHC	pab0064-0	100µL
				pab0064-1	200µL
pAb to Transglutaminase 3 (TG3/eTG)Immunopurified	Rabbit	Human	ELISA, WB, IHC	pab0065	25µg
pAb to Transglutaminase 4 (TG4)	Rabbit	Human	ELISA, WB, IHC	pab0066-0	100µL
				pab0066-1	200µL
pAb to Transglutaminase 4 (TG4)Immunopurified	Rabbit	Human	ELISA, WB, IHC	pab0067	25µg
pAb to Transglutaminase 5 (TG5)	Rabbit	Human	ELISA, WB, IHC	pab0068-0	100µL
				pab0068-1	200µL
pAb to Transglutaminase 5 (TG5)Immunopurified	Rabbit	Human	ELISA, WB, IHC	pab0069	25µg
pAb to Transglutaminase 7 (TG7)	Rabbit	Human	ELISA, WB, IHC	pab0070-0	100µL
				pab0070-1	200µL

CovalAb S.A.S. : 11, Avenue Albert Einstein - 69100 VILLEURBANNE – FRANCE

Phone : 33 (0) 437.654.230 - Fax : 33 (0) 437.289.416 - Mail : enquiries@covalab.com - Web site : www.covalab.com
S.A.S. au Capital de 58 640 Euros - RCS LYON B 401 832 266 - N°SIRET 401 832 266 00050 - Code APE 212 0Z